

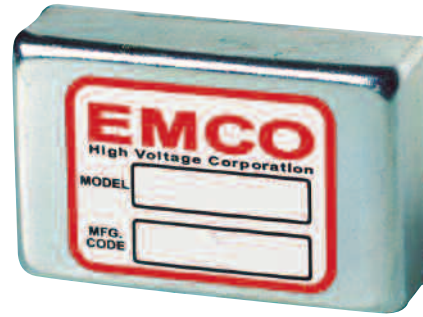
CA Series

1 WATT - DC/DC SINGLE OUTPUT

DC-DC PCB MOUNTED CONVERTERS & POWER MODULES

FEATURES

- Very low ripple, 2mV p-p
- Precision regulated
- Miniature shielded case
- 0-100% programmable
- High stability <25ppm/°C
- Wide input voltage range
- Overload and short circuit protected
- Very low EMI/RFI
- Optional chassi mount kit
- External gain adjust



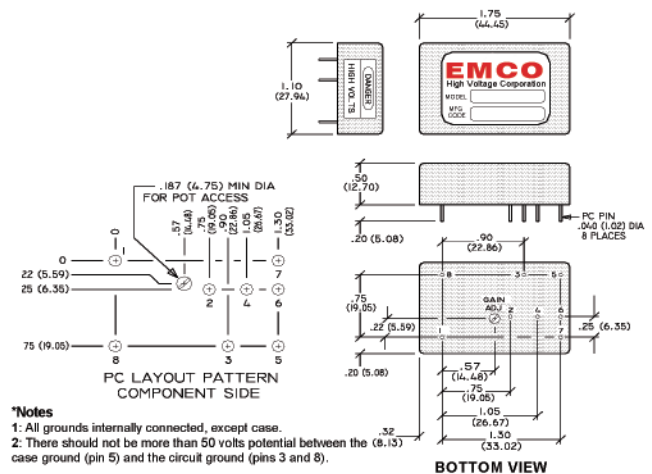
SPECIFICATIONS

INPUT	
Voltage range	5.0 VDC or 11.5 to 15.5VDC.
Current	<80mA no load/<220mA full load.
Programming voltage	0-5V, <150mA.
Voltage monitor	0-5V = 0-100% output.
OUTPUT	
Power	1W.
Reference output	5.0V ±1%, up to 1mA.
Stability	<0.005%/hr.
Linearity	<0.5% (15-100% Vout).
Temperature coefficient	<25ppm/°C.
ENVIRONMENTAL	
Operating temperature	-10°C to +50°C.
Storage temperature	-25°C to +95°C.
GENERAL	
Dimensions	44.45 x 27.94 x 12.70 mm.
Weight	40g.
Packaging	Epoxy encapsulated.
Case material	Zinc plated steel.

PIN CONNECTION

PIN#	FUNCTION
1	Output voltage
2	Programming: 0 to +5V
3	Ground
4	Voltage reference +5V
5	Case ground
6	+Input: 11.5 to 15.5V
7	Voltage monitor: 0 to +5V
8	Output return

TECHNICAL ILLUSTRATION



SELECTION TABLES

MODEL NUMBER (12 V INPUT)	MODEL NUMBER (5 V INPUT)	OUTPUT VOLTAGE	OUTPUT CURRENT	REGULATION LINE	RIPPLE LOAD	FULL LOAD, P-P
CA02P	CA02P-5	0 to +200V	0 to 5mA	<0.01%	<0.01%	<0.01%
CA02N	CA02N-5	0 to -200V	0 to 5mA	<0.01%	<0.01%	<0.01%
CA05P	CA05P-5	0 to +500V	0 to 2mA	<0.01%	<0.01%	<0.01%
CA05N	CA05N-5	0 to -500V	0 to 2mA	<0.01%	<0.01%	<0.01%
CA10P	CA10P-5	0 to +1000V	0 to 1mA	<0.001%	<0.005%	<0.0005%
CA10N	CA10N-5	0 to -1000V	0 to 1mA	<0.001%	<0.005%	<0.0005%
CA12P	CA12P-5	0 to +1250V	0 to .8mA	<0.001%	<0.005%	<0.0005%
CA12N	CA12N-5	0 to -1250V	0 to .8mA	<0.001%	<0.005%	<0.0005%
CA20P	CA20P-5	0 to +2000V	0 to .5mA	<0.01%	<0.01%	<0.0005%
CA20N	CA20N-5	0 to -2000V	0 to .5mA	<0.01%	<0.01%	<0.0005%