

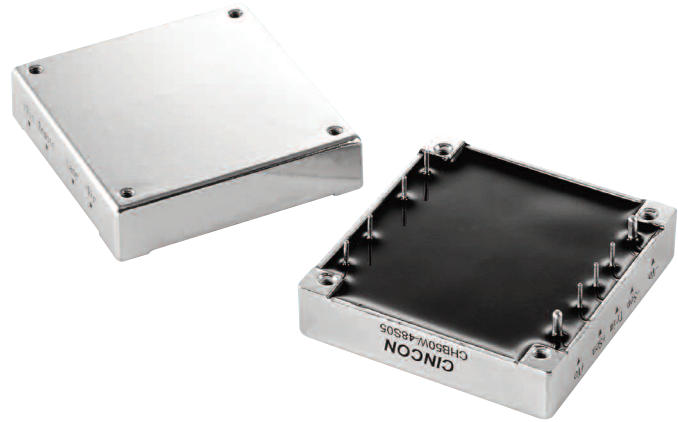
CHB-W Series

50-200 WATTS - DC/DC SINGLE OUTPUT

DC-DC PCB MOUNTED CONVERTERS & POWER MODULES

FEATURES

- Isolated Output
- Half Brick Package
- 4 : 1 Input Range
- Regulated Outputs
- Five-Sided Shield Metal Case
- Continuous Short Circuit Protection
- Efficiency to 92%



SPECIFICATIONS

INPUT		
Voltage range	24V 48V	9-36V 18-75V
Under voltage lockout	24Vin power up power down	8.8V 8V
	48Vin power up power down	17V 16V
Remote On/Off control	ON/OFF pins 2 & 4, positive logic	
Input Filter	Pi type	
Isolation	Input/Output Input/Case Output/Case	1500VDC min. 1500VDC min. 1500VDC min.
Isolation Resistance	107 ohm min	
OUTPUT		
Output voltage	See table	
Output current	See table	
Voltage accuracy	±1% max	
Transient response	25% Step Load Change, <500µ sec	
External Trim Adj. Range	±10%	
Ripple and noise 20MHz BW	3.3V & 5V 12V & 15V 24V	40mV RMS., max. 100mV pk-pk, max. 60mV RMS., max. 150mV pk-pk, max. 100mV RMS., max. 240mV pk-pk, max.

Temperature coefficient	±0.03%/°C
Short circuit protection	Continuous
Line regulation 1	±0.2% max.
Load regulation 2	±0.2% max.
Over voltage protection trip range	115-140%, Vo nominal
Current limit	110% ~140% Nominal Output
Efficiency	See table
Switching frequency	300kHz, typ

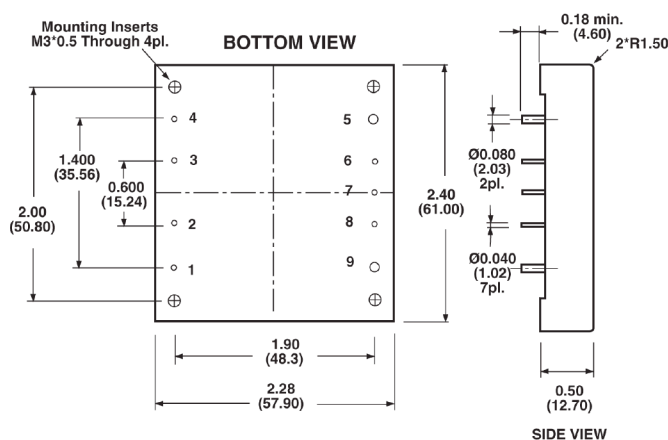
ENVIRONMENTAL	
Operating temperature	-40°C to 100°C base plate
Storage temperature	-55°C to +105°C
Thermal shutdown	100°C, case temperature

MECHANICAL	
Dimensions	57.9 x 61.0 x 12.7 mm
Weight	94g, model dependant

NOTE:

1. Measured From High Line to Low Line.
2. Measured From Full Load to Zero Load.
3. Logic Compatibility Open Collector ref, to -Input.
Module ONOpen Circuit
Module OFF..... <0.8Vdc
4. Suffix "N" to the Model Number with Negative Logic Remote ON/OFF.

MODULE OUT LINE DRAWING



PIN CONNECTION

PIN	FUNCTION
1	+V Input
2	ON/OFF
3	CASE
4	-V Input
5	-V Output
6	-Sense
7	Trim
8	+Sense
9	+Vout

CHB-W Series

50-200 WATTS - DC/DC SINGLE OUTPUT

SELECTION TABLES

MODEL	INPUT VOLTAGE	OUTPUT VOLTAGE	OUTPUT CURRENT	INPUT CURRENT			SIZE
				NO LOAD	FULL LOAD	% EFF	
CHB50W-24S33		3.3 VDC	10:00 AM		1785 mA	77	
CHB50W-24S05		5 VDC	10:00 AM		2570 mA	81	
CHB50W-24S12	9-36 VDC	12 VDC	4.16 A		2510 mA	83	
CHB50W-24S15		15 VDC	3.33 A	50 mA	2510 mA	83	Half-Brick
CHB50W-24S24		24 VDC	2.08 A		2510 mA	83	
CHB50W-48S33		3.3 VDC	10:00 AM		880 mA	78	
CHB50W-48S05		5 VDC	10:00 AM		1270 mA	82	
CHB50W-48S12	18-75 VDC	12 VDC	4.16 A	50 mA	1240 mA	84	Half-Brick
CHB50W-48S15		15 VDC	3.33 A		1240 mA	84	
CHB50W-48S24		24 VDC	2.08 A		1240 mA	84	
CHB75W-24S33		3.3 VDC	15 A		2611 mA	79	
CHB75W-24S05		5 VDC	15 A		3811 mA	82	
CHB75W-24S12	9-36 VDC	12 VDC	6.25A	50 mA	3765 mA	83	
CHB75W-24S15		15 VDC	5 A		3720 mA	84	Half-Brick
CHB75W-24S24		24 VDC	3.12 A		3720 mA	84	
CHB75W-48S33		3.3 VDC	15 A		1289 mA	80	
CHB75W-48S05		5 VDC	15 A		1883 mA	83	
CHB75W-48S12	18-75 VDC	12 VDC	6.25 A	50 mA	1860 mA	84	
CHB75W-48S15		15 VDC	5 A		1838 mA	85	Half-Brick
CHB75W-48S24		24 VDC	3.12 A		1835 mA	85	
CHB100W-24S3V3		3.3 VDC	20 A		3374mA	81.5	
CHB100W-24S05		5 VDC	20 A		4990mA	83.5	
CHB100W-24S12	9-36 VDC	12 VDC	8.3 A		4902mA	85	Half-Brick
CHB100W-24S15		15 VDC	6.7 A	35 mA	4817mA	86.5	
CHB100W-24S24		24 VDC	4.17 A		4849mA	86	
CHB100W-48S3V3		3.3 VDC	20 A		1708mA	80.5	
CHB100W-48S05		5 VDC	20 A		2422mA	86	
CHB100W-48S12	18-75 VDC	12 VDC	8.3 A	30 mA	2408mA	86.5	
CHB100W-48S15		15 VDC	6.7 A		2381mA	87.5	Half-Brick
CHB100W-48S24		24 VDC	4.17 A		2367mA	88	
CHB150W-24S3V3		3.3 VDC	30 A	200mA	4741mA	85	
CHB150W-24S05		5 VDC	30 A	200mA	7022mA	87	
CHB150W-24S12	9-36 VDC	12 VDC	12.5 A	100mA	6944mA	88	Half-Brick
CHB150W-24S15		15 VDC	10 A	100mA	6944mA	88	
CHB150W-24S24		24 VDC	6.5 A	100mA	7022mA	88	
CHB150W-48S3V3		3.3 VDC	30 A	100mA	2371mA	87	
CHB150W-48S05		5 VDC	30 A	100mA	3511mA	89	
CHB150W-48S12	18-75 VDC	12 VDC	12.5 A	50 mA	3472mA	90	
CHB150W-48S15		15 VDC	10 A	50 mA	3472mA	90	Half-Brick
CHB150W-48S24		24 VDC	6.5 A	50 mA	3511mA	89	
CHB200W-48S3V3		3.3 VDC	40 A	80mA	3125mA	88	
CHB200W-48S05		5 VDC	40 A	80mA	4682mA	89	
CHB200W-48S12	18-75 VDC	12 VDC	16.7 A	60mA	4744mA	88	Half-Brick
CHB200W-48S15		15 VDC	13.3 A	60mA	4723mA	88	
CHB200W-48S24		24 VDC	8.3 A	60mA	4716mA	88	

NOTE: Heatsink and cooling details contact Powerbox Sales