

PBC/PFC Series

150-300 WATTS - AC/DC SINGLE OUTPUT

OPEN FRAME & ENCLOSED

FEATURES

- PFC function, PF>0.98@115Vac; >0.95@230Vac
- Universal AC input / full range.
- Approval: ETS/EMC/CE.
- 100% full load burn-in test.
- Protections: overload/ over voltage/ short circuit.



SPECIFICATIONS

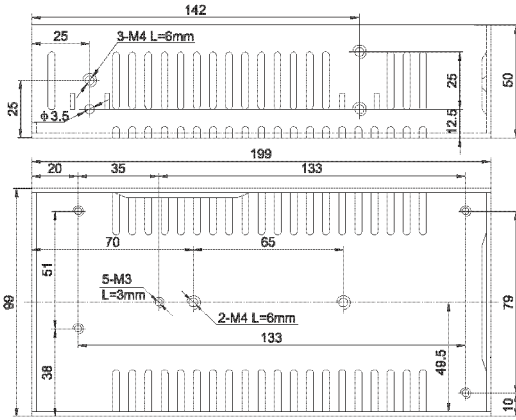
INPUT	
Voltage	85-264VAC
Frequency	47-63Hz.
Inrush current	Cold start, 20A/115V, 40A/230V.
Input leakage current	< 0.7mA /230VAC.
Isolation	I/P – O/P: 3KVAC / 1min I/P – F/G: 1.5KVAC / 1min O/P – F/G: 0.5KVAC/ 1min
OUTPUT	
Voltage	See table.
Current	See table.
Line regulation (full load)	± 0.5%.
Load regulation	0.5%
Voltage adjustment	± 10%.
Overload protection	110% to 130%.
Overvoltage protection	115% to 150%.
Rise time	50ms @ full load (typical).
Hold up time	20ms @ full load (typical).
ENVIRONMENTAL	
Operating temperature	-10°C to 50°C.
Storage temperature	-20°C to 85°C.
Operating humidity	20% - 93% RH, non-condensing.
Storage humidity	20% - 95% RH, non-condensing.
GENERAL	
MTBF	100,000 hours.
Cooling	Force air cooled.
STANDARDS	
Safety	Meet GB4943, UL60950, EN60950
EMC standards	Meet GB9254, EN55022 Class B, EN61000-3-2-3, EN61000-4-2,3,4,5,6,8,11
C-Tick	AS/NZS CISPR11 Group 1, Class A

MODEL NUMBER	OUTPUT1		RIPPLE NOISE	EFFI	POWER
PBC-150-3.3-SC	3.3V	30.0A	100mV	67%	150W
PBC-150-5-SC	5V	30.0A	100mV	75%	150W
PBC-150-7.5-SC	7.5V	20.0A	100mV	79%	150W
PBC-150-12-SC	12V	12.5A	100mV	80%	150W
PBC-150-13.5-SC	13.5V	11.2A	100mV	80%	150W
PBC-150-15-SC	15V	10.0A	100mV	81%	150W
PBC-150-24-SC	24V	6.3A	150mV	83%	150W
PBC-150-48-SC	48V	3.2A	250mV	84%	150W
PBC-200-3.3-SC	3.3V	40.0A	100mV	65%	200W
PBC-200-5-SC	5V	40.0A	100mV	71%	200W
PBC-200-7.5-SC	7.5V	26.7A	100mV	76%	200W
PBC-200-12-SC	12V	16.7A	100mV	79%	200W
PBC-200-13.5-SC	13.5V	14.9A	100mV	80%	200W
PBC-200-15-SC	15V	13.4A	100mV	81%	200W
PBC-200-24-SC	24V	8.4A	150mV	83%	200W
PBC-200-48-SC	48V	4.2A	250mV	84%	200W
PBC-300-5-SC	5V	50.0A	80mV	75%	300W
PBC-300-7.5-SC	7.5V	34.0A	100mV	80%	300W
PBC-300-12-SC	12V	24.0A	100mV	83%	300W
PBC-300-13.5-SC	13.5V	21.0A	100mV	83%	300W
PBC-300-15-SC	15V	19.0A	150mV	83%	300W
PBC-300-24-SC	24V	12.5A	80mV	85%	300W
PBC-300-27-SC	27V	11.0A	100mV	86%	300W
PBC-300-48-SC	48V	6.25A	120mV	85%	300W

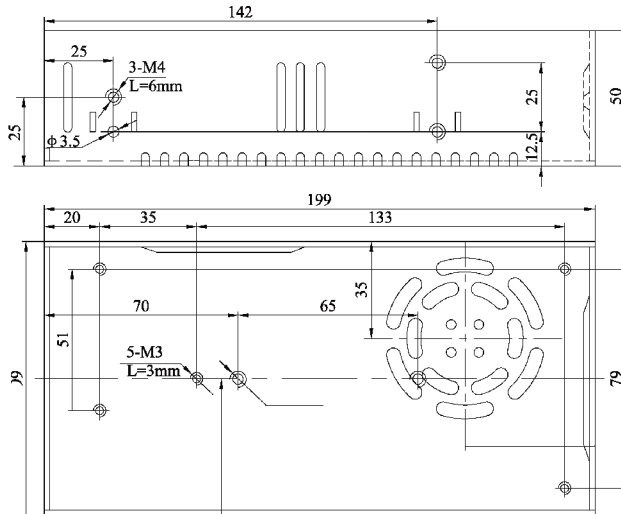
PBC/PFC Series

150-300 WATTS - AC/DC SINGLE OUTPUT

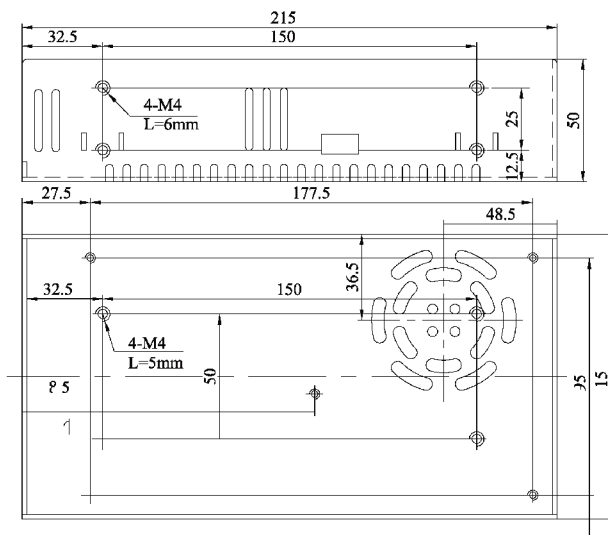
TECHNICAL ILLUSTRATIONS 150W



200W



300W



OPEN FRAME & ENCLOSED